



CRST4141H

尺寸(Dimensions):29X29X26(+16)mm

Features

- 1, Small Size.
- 2, Contact load capacity up to 80A.
- 3, Suitable for automobile.
- 4, PC Board mounting and direct insert mounting available.

Ordering information

CRST 4141H--C-S-DC12V-L- P R

1 2 3 4 5 6 7

- 1, Part number: CRST4141H
- 2, Contact arrangement:A:1A;B:1B;C:1C
- 3, Enclosure: S:Sealed type; Z:Dust cover
- 4, Coil rated voltage(V):DC:6,9,12,24,48
- 5, Coil power consumption:L:1.6W;Nil:1.8W
- 6, Terminals: P:PCB Type; Nil: Plug in type
- 7, Coil transient suppression: R:with Resistance; Nil: Standard

Contact data

Contact Arrangement	1A(1H)(SPST NO);1B(SPST NC);1C(1Z)(SPDT)	
Contact Material	AgNi, AgSnO ₂ , AgCdO	
Contact Rating(Resistive)	1A 1B(80A/14VDC) 1C(NO: 80A/14VDC NC: 60A/14VDC)	
Max.Switching Power	980W	
Max.Switching Voltage	30VDC Max.Switching Current:80A	
Contact Resistance or Voltage Drop	≤50m Ω	
Operation Life	Electrical	10 ⁵
	Mechanical	10 ⁷

Coil Parameter

Coil voltage(VDC)		Coil Resistance Ω ±10%	Parallel Resistance Ω ±5%	Equivalent Resistance Ω ±10%	Pick up Voltage (Max) 70%VDC	Release voltage (Min) 10%VDC	Coil power consumption (W)	Operate Time (mS)	Release Time (mS)
Rated	Max								
12	15.6	90			8.4	1.2	1.6	≤10	≤5
24	31.2	360			16.8	2.4			
12	15.6	80			8.4	1.2	1.8		
24	31.2	320			16.8	2.4			
12	15.6	80	680	71.5	8.4	1.2	2.0		
24	31.2	320	2700	286	16.8	2.4			

Caution:1,The use of any coil voltage less than the rated coil voltage will compromise the operation of the relay.

2,Pick up and release voltage are for test purposes only and are not be used as design criteria.

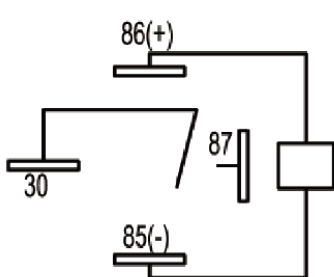
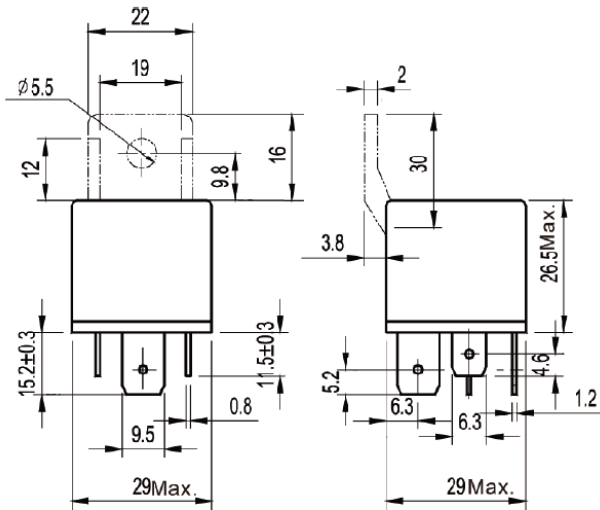
Operation condition

Insulation Resistance		100M Ω min(at 500VDC)
Dielectric Strength	Between open Contacts	500VAC 1min
	Between Contacts and Coil	500VAC 1min
Shock Resistance	Functional	98m/s ²
	Destructive	980m/s ²
Vibration Resistance		10~40Hz Double amplitude 1.5mm
Terminals Strength		8N 4N(PCB)
Ambient Temperature		-40~85°C
Relative Humidity		85%(at 40°C)
Mass		32.5g

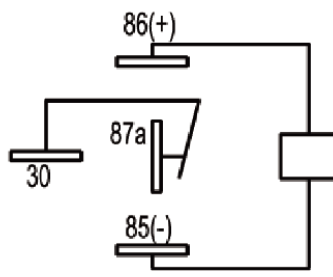
Dimensions(mm)

普通型

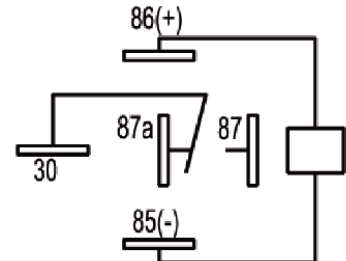
PCB型



1A

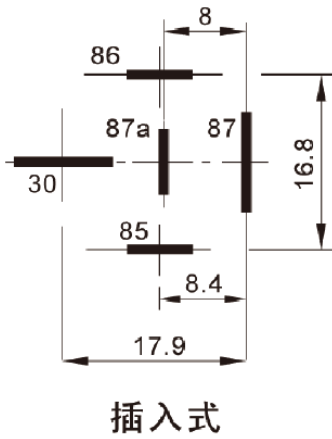


1B

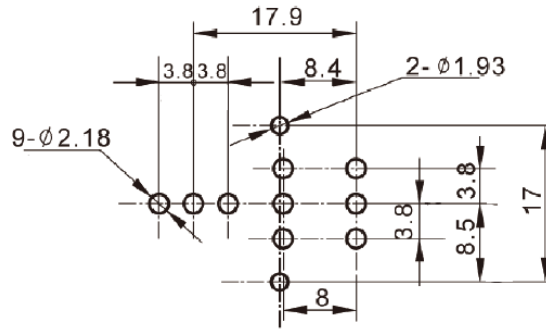


1C

接线图 (底视图)



插入式



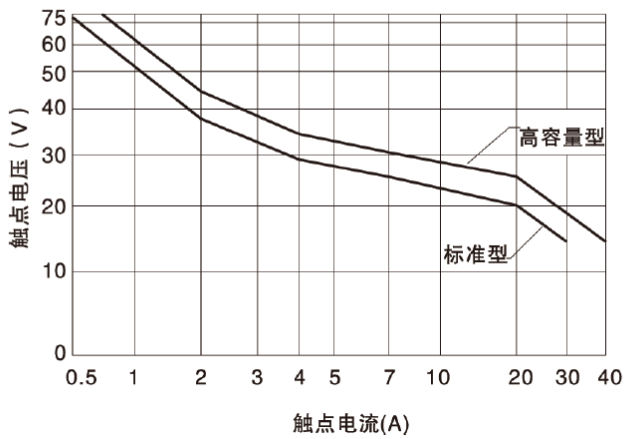
70A、80A PCB式

安装尺寸图 (底视图)

Reference Data

性能曲线图

最大切换功率



环境温度 vs 线圈电压

